



Connections—The Newsletter of Chapter 52, Columbus and Central Ohio, Society of Broadcast Engineers



There will be a joint meeting of the Ohio Section of SMPTE and SBE Chapter 52
Thursday, February 21, 2019 at the
**WBNS Studios, 770 Twin Rivers Drive,
Columbus. Ohio 43215**
Refreshment at 6:30 PM,
Program at 7:00 PM

Speaker: Terry Douds

Terry entered The Ohio State University as an EE major in 1974, graduating in 1979 with a BS in Audio Recording. In 1978 he received the 1st “deebee” award from Downbeat Magazine for Best Engineered Studio Recording by College Students. He began working at Mus-I-Col Recording Studios in Columbus, OH, doing media and music recording until moving on to become Associate Director of The Recording Workshop in Massieville, Ohio 1981 to 1986. He also began teaching Audio Production as an Adjunct Assistant Professor at Capital University. He moved to video in 1986, becoming a video editor for two different post houses (The Media Group and SOS Productions) before joining faculty at Ohio University in Audio in 2002. He currently holds an MS in Industrial Engineering (Engineering Management) from Ohio University, and teaches Audio Production at Ohio University-Lancaster. He is Broadcast Operations Supervisor for WOUB, the PBS affiliate in Athens, OH, and is a member of SBE, AES, IEEE and ATSC. He represents PBS on S34-2, the Audio subcommittee for the ATSC 3.0 NextGen television standard, is a member of the AES Technical Committee for Over The Top and Video Streaming (AGOTTVS), and is a member of the CTA standards group R4WG8 for Loudness in Mobile Devices. He is also a member of the AdCom of IEEE/BTS and is chair of the PBS ETAC ATSC 3.0 Working Group.

Topic: Utilizing Immersive Audio in NextGen Television

With the movement towards ATSC 3.0, AC-4 Audio will be replacing AC-3 as our distribution format in the United States. Why did this selection become the standard for the US (while the rest of the world settles with MPEG-H)? What are quirks engineers may encounter when establishing this in their plants? What makes Immersive Audio, Object Oriented Mixing, and the like different than what we currently use, and how will it affect those who produce material for distribution, as well as what will it mean for those of us transmitting this material? How can these things be most easily be achieved to make this workflow natural within Television plants?

Chapter 52 Officers

Chairman:

John Owen, #3620
1393 Dutch Thomas Road
Peebles, Oh 5660
johno@qcom1.com
703.930.3763

Vice Chairman:

John McKinley, #134113
510 Whitley Drive
Gahanna, Oh 43230
OhioRFman@gmail.com
614.403.8139

Secretary, Treasurer and Newsletter Editor

Ralph B. Hoffman #19978
5665 Vanatta Rd,
Centerburg, Oh 43011
R.Hoffman@IEEE.Org
740.625.6575

Program Chairman:

Gene Batey
bateyg@hotmail.com
614.531.7344

Editor Emeritus

Dave White #4363
288 Larrimer Avenue
Worthington, Oh 43085
DAWHI1@Columbus.rr.com
614.888.2069

PLANNING AHEAD

Early Television Convention

May 3, 4 and 5, 2019

(614) 771-0510. info@earlytelevision.org.

5396 Franklin Street, Hilliard, Ohio 43026.



PLANNING AHEAD

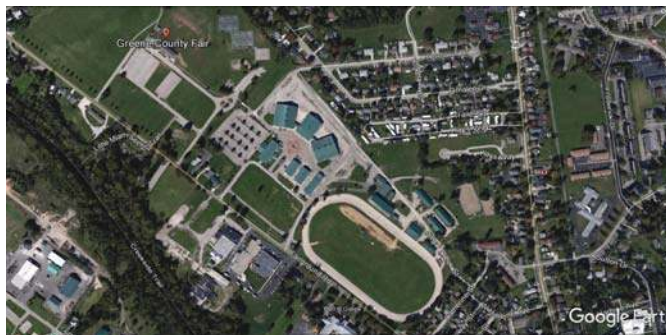
Dayton Hamvention

May 17, 18, and 19, 2019

(937) 276-6930, info@hamvention.org

P.O. Box 964, Dayton, OH 45401-0964

At the Green County Fairgrounds



INDUSTRIAL POWER SYSTEMS • LIGHT COMMERCIAL • RESIDENTIAL STANDBY
MARINE GENERATORS • MOBILE GENERATORS • TOWABLE GENERATORS



**RELIABLE POWER.
FIVE-STAR SERVICE.
PREMIUM PRODUCTS**

KOHLER Generators

BPS Buckeye Power Sales
6850 Commerce Court Drive Blacklick OH 43004
614-861-6000 / 800-523-3587
www.buckeyepowersales.com



Christine Zuba
Northern Region Sales Manager

23 Rainbow Dr
Sewell, NJ 08080
Direct: 856.256.8190
Cell: 207.240.5254
www.dielectric.com
christine.zuba@dielectric.com




**FUELLGRAF
CHIMNEY &
TOWER, INC.**
ELECTRICAL DESIGN & CONSTRUCTION

**Tall Structure Electrical
Aviation Obstruction Lighting
Maintenance & Installation**

Jerry Ehlers, Director
Direct: +1.224.220.3000
jehlers@chimneytower.com
www.chimneytower.com

Engineering & Construction Offices
124 South St
Franklin KY 42134
HQ: +1.270.598.8859



Joe Wozniak
Eastern Region Account Manager, TV Products
jwozniak@eriinc.com

+1 (267) 408-3037 (TEL)
+1 (812) 925-4030 (FAX)
7777 Gardner Road (877) ERI - LINE (TFN)
Chandler, Indiana 47610-9219 USA www.eriinc.com (WEB)

Welcome to the Early Television Foundation and Museum

The [Early Television Foundation](#) is dedicated to the preservation of the technology from the early days of television. Our website's [mission](#) is to preserve and make available to the public the history of early television, from the mechanical systems of the 1920s through the introduction of color television in the 1950s.

**The Early Television Museum and [Foundation](#) depends on donations to fund their operations. Please consider making a tax-deductible contribution to the Early Television Foundation.
Become a [Member of the Museum](#) for 2019**

[2019 Convention Dates - May 3 to 5](#)

Please visit earlytelevision.org and explore this web site which is rich in photographs, schematics, TV details of construction and materials, remanufacturing of pictures tubes, ideas for contributing vintage television studio and transmitter equipment to the museum from your station, and memories. Also consider volunteering some time, and yes even money, to help the museum to survive and prosper. It is certainly centered on the very industry from which we make a living and is a part of our heritage.

SBE and ATSC to Develop ATSC 3.0 Certification for Broadcast Engineers

The Society of Broadcast Engineers, Inc. (SBE), the association for broadcast and multimedia technology professionals, and the [Advanced Television Systems Committee](#), Inc. (ATSC) last May announced a cooperative effort to develop a new Specialist level of SBE certification that will benchmark an individual's proficiency in the ATSC 3.0 System standard.

"SBE Certification covers a range of experience levels and disciplines in broadcast and media engineering. As broadcast engineering diversified beyond legacy technology, the SBE Certification Program also diversified by adding certifications for computer networking and IT, and then a series of specific Specialist Certifications for television transmission, AM directional arrays, and digital radio. With the industry preparing to implement ATSC 3.0, broadcast engineers must be proficient in the next-generation television technology. The SBE and ATSC are working together to develop the next SBE Certification Specialist to cover ATSC 3.0," said SBE President Jim Leifer, CPBE.

"ATSC is pleased to work with SBE to develop an ATSC 3.0 Specialist Certification program. The SBE has extensive experience training and certifying broadcast engineers. Our work with the SBE is part of efforts to support deployment of ATSC 3.0," said Mark Richer, president of ATSC.

The world's first internet-based broadcast television standard, ATSC 3.0 will give stations and viewers more choices and options now that broadcast TV can seamlessly connect with broadband-delivered content. Approved for use by U.S. broadcasters and deployed in South Korea, ATSC 3.0 technologies make it possible to transmit in Ultra High-Definition, to offer immersive audio, and to add more capabilities like high dynamic range, wide color gamut, and interoperability with Internet-delivered content.

The Society of Broadcast Engineers Certification Program is part of the society's efforts contributing to the advancement of broadcast engineering for the general benefit of the entire broadcast industry. The program was created in 1975 to recognize and raise the professional status of broadcast engineers by providing standards of professional competence. Through the years, the SBE's certification program has become recognized in the industry as the primary method of verifying the attainment of educational standards. With the industry constantly changing, the SBE-certified engineer must keep up with those changes.

To hold SBE Specialist Certification, an individual must first hold one of the SBE core-four certifications: CBT, CBRE/CBTE, CSRE/CSTE or CPBE. Once the new Specialist Certification is released, applicants will take a 50-question, multiple-choice exam and answer an essay question.

More information about SBE certification is online at sbe.org/cert.

Paul Barzizza



GATESAIR®

paul.barzizza@gatesair.com
Office: +1 513 459 3487
Mobile: +1 513 226 5782



Chuck Maines
Midwest Office



Direct Toll-Free
844-436-4327

Mobile: 765-914-7306 **eMail:** chuckm@scmsinc.com
Office: 765-939-1088 **www.scmsinc.com**

Single Products to Entire Studio & Transmitter Facilities



CHIP SCHNEIDER
SALES MANAGER

+1 847 919 3550 x108
+1 (513) 605 0001
+1 (847) 991 9505
2402 Millennium Dr
Elgin IL, 60124 USA
cschneider@dtvinnovations.com

Main | 801 575-8801
Mobile | 317 691-0374
Fax | 801 537-3099
Web | utahscientific.com

Rob Shevlot *Regional Sales Manager*
E-mail | rshevlot@utsci.com



4750 WILEY POST WAY, SUITE 150 SALT LAKE CITY, UTAH 84116 USA



408 WASHINGTON BLVD
MUNDELEIN, IL 60060-3102

HQ (800) CABLE-IT (222-5348)
Local: (847) 949-9944
FAX: (847) 949-9595
E-MAIL: SALES@CLARKWIRE.COM
WWW.CLARKWIRE.COM



Consulting • Design • Sales • Integration



Support for Today
Solutions for Tomorrow

Mike Siddall, CTS
Sales Engineer

967 Burrell Ave.
Grandview Heights, OH 43212
mike@provideosystems.com

614-261-1272
(cell) 614-314-9238
800-832-2367
www.provideosystems.com



BROADCASTERS GENERAL STORE
2480 SE 52nd Street • Ocala, FL 34480 • 352-622-7700 • Fax 352-629-7000

352-622-7700

Ohio Region Sales: Mary Schnelle
Direct Office Phone: 513-899-3036
Mobile Phone: 513-476-4474
Fax: 513-824-8113



LiveU Inc.
2 University Plaza Drive
Suite 505
Hackensack, NJ 07601

O: 201-742-5227 (ext 149)
M: 415-310-2646

Arco Groenenberg
Director of Sales, Central Region

arco@liveu.tv
www.liveu.tv


Please Support Our Newsletter Advertisers!



CABINETWORKS UNLIMITED

FINE CUSTOM AUDIO AND VIDEO CABINETRY

PHONE: 234.320.4107 **KENNETH BAGWELL**
 FAX: 234.320.4109 1725 SALEM PARKWAY WEST
 E-MAIL: ken@cabinetnetworks.com SALEM, OH 44460
 www.cabinetnetworks.com



grass valley

Wayne A. Schrand
Senior Account Manager

Grass Valley
46A Technology Parkway South
Norcross, GA 30092 USA
Direct: (404) 929-5000
Mobile: (513) 702-9479
Fax: (404) 329-0445

www.grassvalley.com wayne.schrand@grassvalley.com



Gary Liebisch
Regional Sales Manager, Eastern US

Tel: 1 740 513 2087
 Mobile: 1 513 289 6322
 Fax: 1 513 672 0600
 gary.liebisch@nautel.com

Making Digital Radio Work.



Mike Sparke
Regional Sales Manager

8190-A Beechmont, Suite 279
Cincinnati, OH 45255

(c) 513-317-8732
 (p) 513-624-8666
 (e) msparke@ivideo.com

www.ivideo.com

Ohio Broadcast Consultants
 Gahanna, Ohio
 Specializing in Broadcast RF Systems
 John McKinley, Owner
 (M) 614.403.8139
 OhioRFman@gmail.com



OSBORN ENGINEERING
 Don Archiable
 Vice President / Director of Technology
 darchiable@osborn-eng.com
 m 216 630 2303



Vince Deur
 Account Manager - MI/OH/IN/Northern KY
 Professional Solutions of America
 www.sony.com/professional

Sony Electronics Inc.
 1 Sony Drive
 Park Ridge, New Jersey 07656
 Mobile +1 616 250 6216
 E-mail vincent.deur@am.sony.com

Marty R. Morgan
Morgan Consulting Services
 Broadcast Video / Audio

Cell 740-504-7033 9770 New Delaware Rd.
 martymorgan@embarqmail Mount Vernon, OH 43050

Please Support Our Newsletter Advertisers!